



---

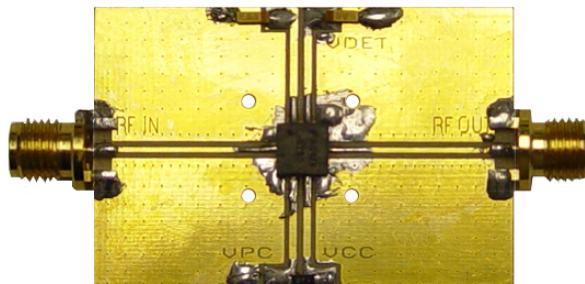
# AMP -58L

## RF LINEAR AMPLIFIER

### 500 mW 5.8 GHz

---

This is a smallest linear amplifier for 5.7 GHz- 5.9 GHz band. This small amplifier requires 1 mW input RF Power for the maximum output power of 500 mW. It is excellent for security applications or small airplane models. It works from 3.5 V- 4 V with a current consumption of 800 mA.



Technical Specifications	
BATTERY POWER	12 V- 14 V Max.
RF POWER	500 mW max!
CURRENT CONSUMPTION	800 mA
RF IN/OUT	50 ohms
NOISE	<4 dB
OPERATION	WIDEBAND
INPUT POWER	1 mW
FREQ. RANGE	5.7 GHz – 5.9 GHz
HIGH GAIN	33 dB / 5.8 GHz
SIZE:	1.5" X 1.0"
WIDEBAND OPERATION	LINEAR CLASS
IN / OUT CONNECTORS	SMA