



AMP-4754H

TV UHF LINEAR AMPLIFIER

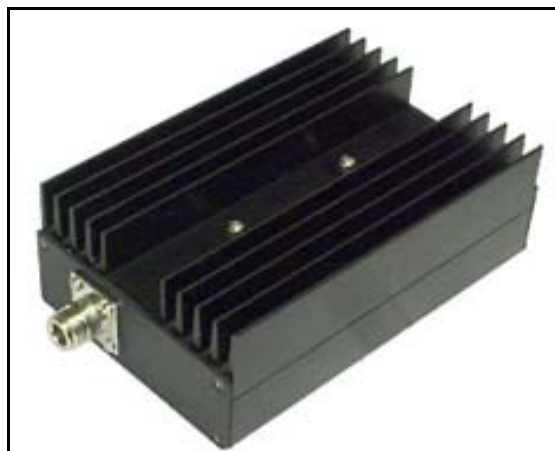
60 W IN A CLASS WITH

ADJUSTABLE POWER OUTPUT

FOR TV CHANNELS 14-26 IN UHF RANGE NTSC

This is a high quality professional 25 W TV linear amplifier that requires minimum driving input of 15 m W for 60 W RF output power / 12.6 V DC. This TV linear amplifier works from 470 MHz -540 MHz and doesn't require any tuning or adjusting. This amplifier has built-in UHF filter. Power supply is 12 V - 14 V / 8 A. Gain is 27 dB. Input / Output 50 ohms impedance. It is excellent for low power TV stages in UHF-L band (I). This amplifier is excellent for TV applications in A class with maximum 60 W RF power in linear class CW.

Dimensions: 6.0" X 4.0" X 2.0".



Technical Specifications	
BATTERY POWER	12 V - 14 V
RF POWER	60 W CW
CURRENT CONSUMPTION	8 A
RF IN/OUT	50 ohms
INPUT POWER	15 mW- 50 mW max
FREQ. RANGE:	470-540 MHz (NTSC channels 14-26)
HIGH GAIN	27 dB / 60 MHz
SIZE:	6.0" X 4.0" X 2.0"
OPERATION: WIDEBAND OPERATION	WIDEBAND
CLASS	LINEAR AB/A
POWER OUT	ADJUSTABLE