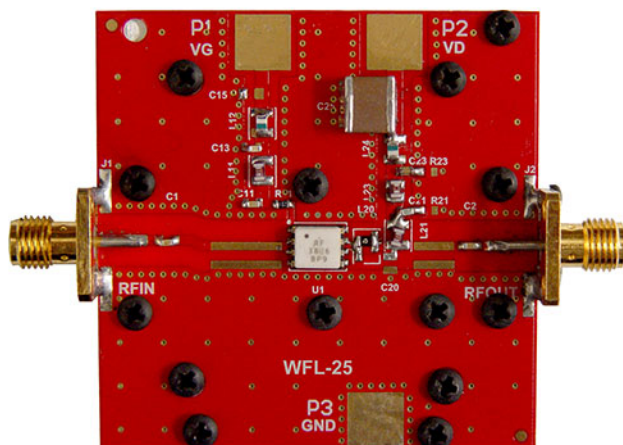


# WFL-25 WIDEBAND LINEAR AMPLIFIER 30 MHz – 2.5 GHz



The new wideband linear amplifier for UHF band based on single IC chip is an excellent design made for special applications, lab testing, digital and analog RF and TV applications. Amplifier model WFL-25 covers entire band VHF-UHF from 30 MHz- 2.5 GHz. This board requires 28 VDC / 0.5 A. The minimum driving input is 30 dBm; required RF input for the maximum RF output power is 32 dBm. Rated output RF power is 10 W max. Dimensions: 2.0" X 2.0"

Technical Specifications	
Frequency:	10 MHz- 1 GHz
DC power	28 V
Current consumption:	0.6 A max
Gain:	9 dBi
Impedance: input-output	50 ohms
Max. input power	32 dBm
VSWR:	< 1.5:1 avg.
Connectors:	SMA
Weight:	20 grams
Size::	2.0" X 2.0"
Operating temperature:	-40 ° C to 85 ° C
RoHS compliant:	Yes

