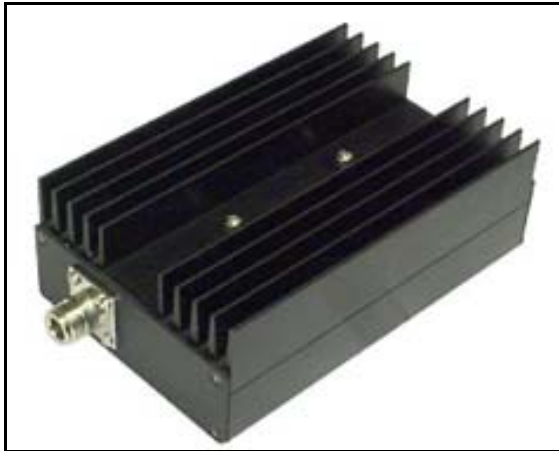


TV VHF LINEAR AMPLIFIER AMP-30W VHF

TEST RESULTS

175 MHz				190 MHz				225 MHz			
Gain (dB)	Input	Pout	I (A)	Gain (dB)	Input	Pout	I (A)	Gain (dB)	Input	Pout	I (A)
16.5 dB	1.1W	32 W	3.55A	15 dB	1.2W	31.5 W	3.54 A	14.5 dB	1.01W	30.5 W	3.58 A



Bandwidth	Pout=30W (CW)	175 MHz	-	225 MHz	MHz
Power gain	Pref=27W 3ton	8.2	8.1	8.0	dB
Power out @1 dB compression	Pout 27W	28			W
I	Pout= 28W		3.39		A
Out return loss	Pout = 34W	15		17	dB
Intermodulation distortion -3 ton	Vision carrier -8 dB	-52	-53	-55	dBc

Measured at 28V DC +- 1% 3.7 A

Proprietary of www.rf-links.com/