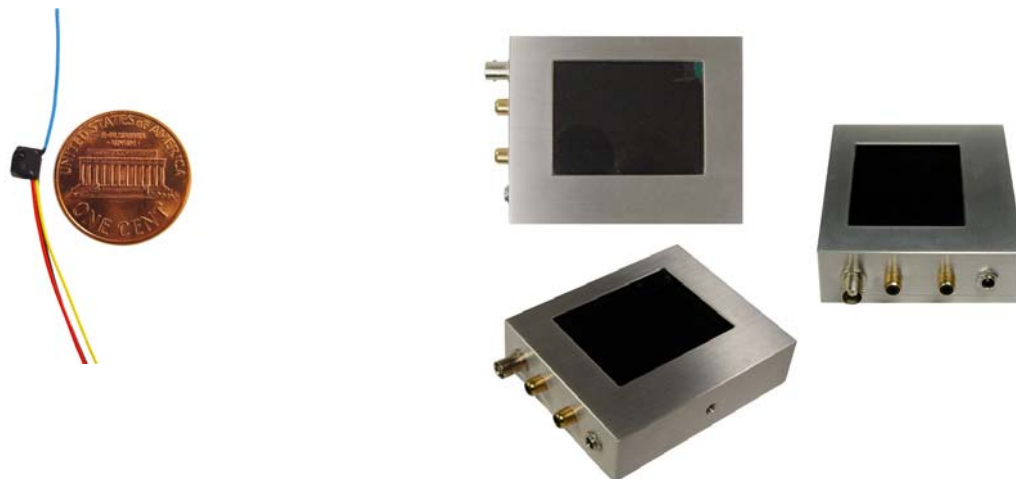




# DX-1 & MTR-2400 SPECIAL SINGLE CHANNEL VIDEO TRANSMITTER & RECEIVER PAIR 2,300 MHz



New 2.3 GHz Transmitter and Receiver are fully synthesized single channel items (2,300 MHz). The RF power output power is 1-5 mW. They are great for low range communication up to 30-100 ft LOS or experiments.

Technical Specifications	DX-1 Transmitter
Operating Frequency:	2,300 MHz (different frequency available on request)
Channels:	Single channel
Channel selection:	N/A
DC Voltage:	9-12 V
RF output power:	1-5 mW / 50 ohms
Minimum required voltage:	3 V
Battery power:	3.5V
Frequency stability:	+/-200 kHz/ h
Video distortion:	3%
Maximum range:	50-80 ft LOS
Video Format:	PAL, NTSC
Current Consumption:	10 mA / 3V
Antenna:	Attached
Video level:	1 V
Video Impedance:	75 ohms
Audio input:	N/A
Temperature Range:	-40 +75* C
Dimensions:	2.8" X 1.5" X 0.75"
Weight:	1 gram
Modulation:	WFM

**Technical Specifications****R-820 Receiver****RF:**

Input Frequency:	2400 MHz, 4 channels, No deemphasis
Sensitivity:	-95 dBm (built in preamplifier)
Output Impedance:	75 Ohms.

**VIDEO:**

Output Level:	1.0 Vp-p, NTSC
Output mode:	WFM
panel control	$\pm$ 10dB.
Formats:	4:3 and 16:9
Output Impedance:	75 Ohms.

**GENERAL:**

DC Power Input:	+12 VDC @ 350 mA,
Temperature:	0° C to +50° C.
Dimensions:	1" W*3.5"H*7.5"D.
Weight:	300 gr