



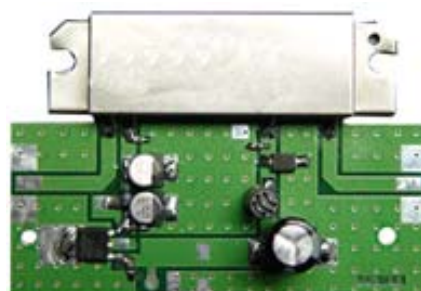
# AMP-750/45 HIGH GAIN UHF LINEAR AMPLIFIER 750 MHz 45 W IN CLASS A

## EXCELLENT FOR EMERGENCY UHF SERVICES OR TV APPLICATIONS

This is a high quality Professional UHF TV linear amplifier 45 W RF power in A class. It is fully broadband for all UHF channels from 750 MHz- 890 MHz. This amplifier needs 15 mW RF power for a full 45 W output/50 ohms. Low intermodulation distortion makes this unit perfect for digital or analog broadcast television. Power supply is 12.6 V / 6 A.

Extremely linear this amplifier has been made for small TV stations and studios. It is ideal as an exciter for a high power TV stages. This amplifier comes assembled and tested. This amplifier must be installed on a heat sink (not included).

Dimensions: 3.0 " X 2.0 ".



| Technical Specifications      |                 |
|-------------------------------|-----------------|
| BATTERY POWER                 | 12 V-14 V       |
| RF POWER                      | 45 W            |
| CURRENT CONSUMPTION           | 6 A             |
| RF IN/OUT                     | 50 ohms         |
| INPUT POWER                   | 5 mW- 15 mW     |
| FREQ. RANGE:                  | 750 MHz-890 MHz |
| HIGH GAIN                     | 26 dB / 750 MHz |
| SIZE:                         | 2.0" X 3"       |
| OPERATION: WIDEBAND OPERATION | WIDEBAND        |
| CLASS                         | LINEAR AB/A     |
| POWER OUT                     | ADJUSTABLE      |

Copyright © 2001-2014 RF-LINKS