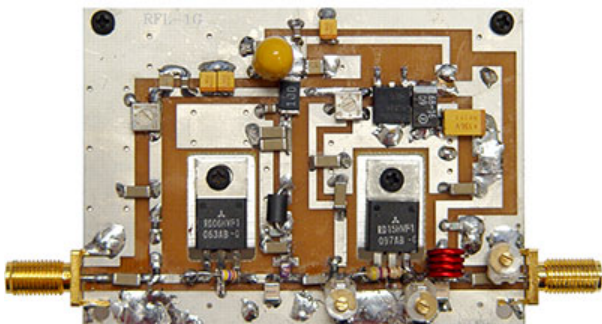


AMP10-800 OB
WIDEBAND LINEAR AMPLIFIER
10 MHz – 800 MHz



The new linear amplifier for UHF band is excellent design made for special applications, lab testing, digital and analog RF and TV applications. This board requires 12 VDC / 1.5 A. Amplifier covers full frequency range from 10 MHz-800 MHz. The minimum driving input is 10 mW; required RF input is 20-50 mW. Rated output RF power is 5 W, max 10 W/15V. Dimensions: 2.97" X 2.15"

Technical Specifications	
Frequency:	10-800 MHz
Gain:	26 dBi
DC power	12-16 V
Current consumption:	1.6 A max
Frequency:	10 MHz- 0.8 GHz
Impedance: input-output	50 ohms
Max. input power	150 mW
VSWR:	< 1.5:1 avg.
Connectors:	SMA
Weight:	26 grams
Size::	2.97" X 2.15"
Operating temperature:	-40 ° C to 85 ° C
RoHS compliant:	Yes