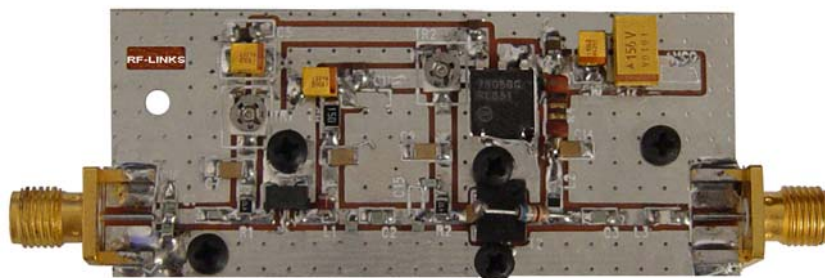


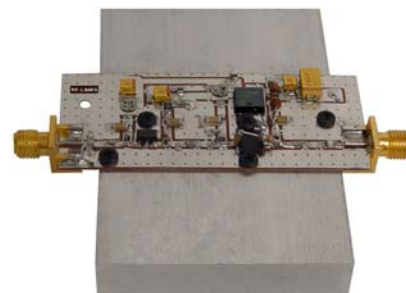


## AMP45-990/2OB WIDEBAND LINEAR AMPLIFIER 45 MHz – 1000 MHz



The new linear amplifier for UHF band is excellent design made for special applications, lab testing, digital and analog RF applications. This board requires 12 VDC / 1A. The minimum driving input is 1 mW; absolute maximum RF input is 50 mW. Rated RF power is 2 W.

Technical Specifications	
Frequency:	45-1000 MHz
Gain:	26 dBi
DC power	9-12V
Current consumption:	1.1 A max
Frequency:	40 MHz- 1 GHz
Impedance: input-output	50 ohms
Max. input power	50 mW
VSWR:	< 1.5:1 avg.
Connectors:	SMA
Weight:	6 grams
Length:	2 inch
Operating temperature:	-40 ° C to 85 ° C
RoHS compliant:	Yes



## TEST RESULTS

FREQUENCY	POWER INPUT 1 (dBm)	POWER OUTPUT 1	POWER INPUT 2 (dBm)	POWER OUTPUT 2	POWER INPUT 3 (dBm)	POWER OUTPUT 3
45 MHz	0	350 mW	3.00	560 mW	10.00	1.45 W
50 MHz	0	450 mW	3.00	800 mW	10.00	1.65W
60 MHz	0	850 mW	3.00	1.35 mW	10.00	1.85 W
70 MHz	0	1.35 W	3.00	1.85 W	10.00	2.20 W
80 MHz	0	1.90 W	3.00	1.99 W	10.00	2.45 W
90 MHz	0	1.95 W	3.00	2.00 W	10.00	2.46W
100 MHz	0	2.00 W	3.00	3.00 W	10.00	2.44W
145 MHz	0	1.35 W	3.00	2.65 W	10.00	3.50 W
200 MHz	0	1.25W	3.00	2.29 W	10.00	3.88 W
250 MHz	0	1.12 W	3.00	2.25 W	10.00	3.30 W
300 MHz	0	885 mW	3.00	1.90 W	10.00	2.89 W
400 MHz	0	750 mW	3.00	1.60 W	10.00	2.45 W
500 MHz	0	550 mW	3.00	995 mW	10.00	1.89 W
600 MHz	0	350 mW	3.00	750 mW	10.00	1.45 W
700 MHz	0	425 mW	3.00	950 mW	10.00	1.35 W
800 MHz	0	365 mW	3.00	850 mW	10.00	1.25 W
860 MHz	0	500 mW	3.00	995 mW	10.00	1.22 W
900 MHz	0	275 mW	3.00	750 mW	10.00	990 mW
1.00 GHz	0	125 mW	3.00	350 mW	10.00	925 mW